



Keystone KeySteel Sq. Ft. Panel System is a world-class structural retaining wall system, specifically designed for use with highways and heavy construction. KeySteel combines Keystone's patented modular concrete units and inextensible steel soil reinforcement to develop an extremely stable, aesthetically appealing and cost-effective retaining wall structure.

Keystone KeySteel's aesthetic options include a wide range of completed wall appearances without the high cost of customization. KeySteel also utilizes design methodology and material components that comply with the standards for inextensible reinforcement as outlined in the current AASHTO Standard Specifications for Highway Bridges.

Sculptured Rock Face

8" h x 18" w x 12" d

Also available in straight face.



Fiberglass Alignment Pins
1/2" x 5 1/4"

Used at non-Keystrip reinforcement connections

Galv. Steel Connection Pins
1/16" x 8"

Used at Keystrip reinforcement connections

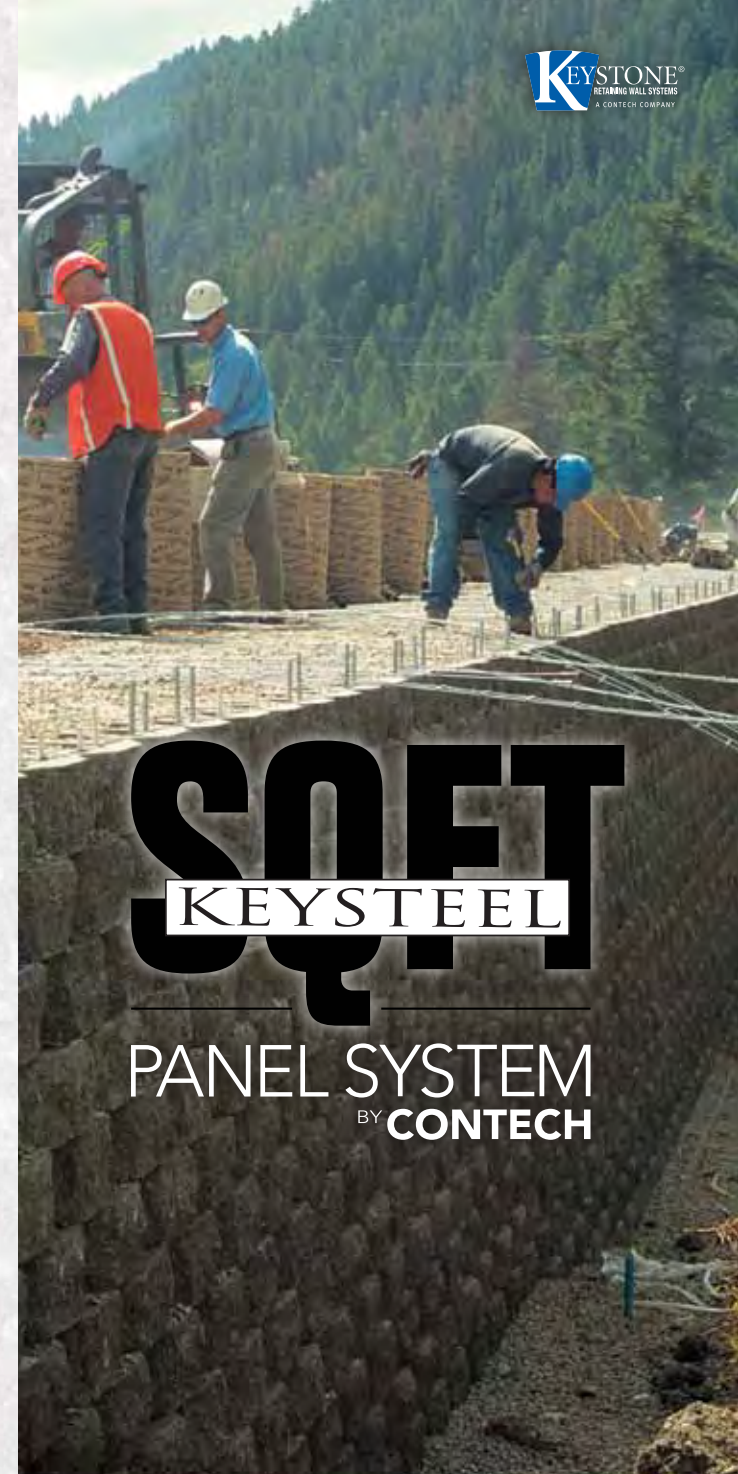


Distributed By:



Keystone Retaining Wall Systems, Inc.
A CONTECH Company
4444 West 78th Street • Minneapolis, MN 55435
(952) 897-1040 • www.keystonewalls.com

We reserve the right to improve our products and make changes in the specifications and design without notice. The information contained herein has been compiled by KEYSTONE and to the best of our knowledge, accurately represents the KEYSTONE product use in the applications which are illustrated. Final determination of the suitability for the use contemplated and its manner of use are the sole responsibility of the user.



SQFT
KEYSTEEL
PANEL SYSTEM
BY **CONTECH**

Strength, Set in Steel



Features & Benefits

Durable Components

- Inextensible steel reinforcement with 75 to 100 year design life capabilities.

Aesthetic Appeal

- KeySteel units are available in a wide variety of color options, textures and patterns

Design Flexibility

- Curves, corners and unique geometries

Ease of Construction

- Quick and easy, no cranes or heavy equipment required

Cost-Effective Results

- Competitive with other MSE structures

Intended for the Most Demanding Jobs

- Deflections with steel reinforcement are reduced by over 66% compared to geosynthetic reinforcement
- HITEC Evaluation #40478

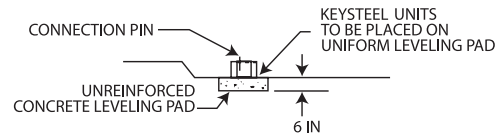
Ideal for Deflection Sensitive Applications

- Bridge abutments
- Tall walls, up to 70 feet, have been built
- Walls with heavy surcharges
- Walls where loads or structures bear on or are immediately behind the reinforced mass



KeySteel Sq. Ft. Panel System Construction Sequence

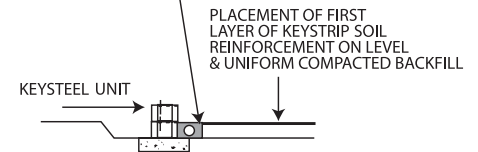
STEP 1



INITIAL COURSE OF KEYSTEEL

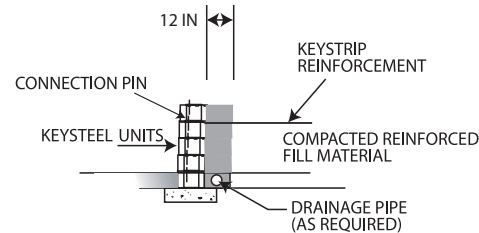
STEP 2

DRAINAGE AGGREGATE MATERIAL IS PLACED PRIOR TO SECOND COURSE



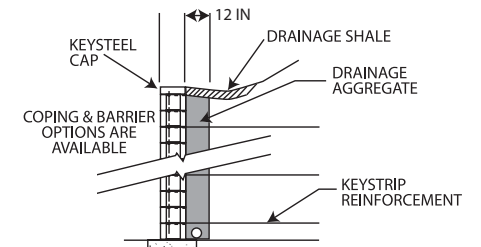
SECOND COURSE OF KEYSTEEL

STEP 3



ALTERNATE CONSTRUCTION COURSES

STEP 4



KEYSTEEL CAPPING OPTION

The Keystone Advantage

When KeySteel is specified, a complete retaining wall system is engineered and supplied to meet site-specific conditions, including timely arrival and sequencing of materials for construction.

After over 24 years at the forefront of the industry, Keystone Retaining Wall Systems, Inc. continues to set the standard for excellence and innovation within the segmental retaining wall industry. Keystone represents the global benchmark in soil retention, erosion control and landscape systems. Holding over 50 patents, Keystone symbolizes cutting-edge design, performance and aesthetics. Keystone partners with the best network of product developers, engineers, sales professionals and manufacturers in the business. They help ensure that Keystone offers the best in site solutions for residential, commercial, recreational, industrial and government applications.

